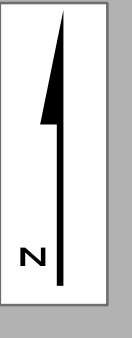


# Senate District 33

With Precincts (2025)

This map shows the Legislative Districts ordered by the Minnesota Supreme Court Special Redistricting Panel in the matter of *Watson, et al. v. Sachs, et al. v. Simon, et al.* (A21-0243, A21-0546), on February 15, 2022. Base data and features used in this plan are derived from the 2020 TIGER files prepared by the U.S. Census Bureau.



- Interstate Hwy
- US Hwy
- State Hwy
- Ramps
- County Road
- Local Road
- Precincts (2025)
- Cities and Towns
- Senate Districts
- Counties
- American Indian Reservation
- Lakes & Streams
- Parks

