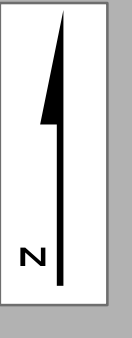
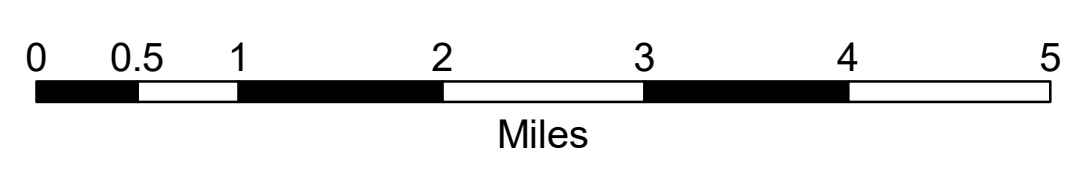


House District 28B

With Precincts (2025)

This map shows the Legislative Districts ordered by the Minnesota Supreme Court Special Redistricting Panel in the matter of Watson, et al, Sachs, et al v. Simon, et al (A21-0243, A21-0546), on February 15, 2022. Base data and features used in this plan are derived from the 2020 TIGER files prepared by the U.S. Census Bureau.



- Interstate Hwy
- US Hwy
- State Hwy
- Ramps
- County Road
- Local Road
- Precinct Name Precincts (2025)
- CITY/TOWN NAME Cities and Towns
- 28B House Districts
- COUNTY NAME Counties
- NAME American Indian Reservation
- Lakes & Streams
- Parks

