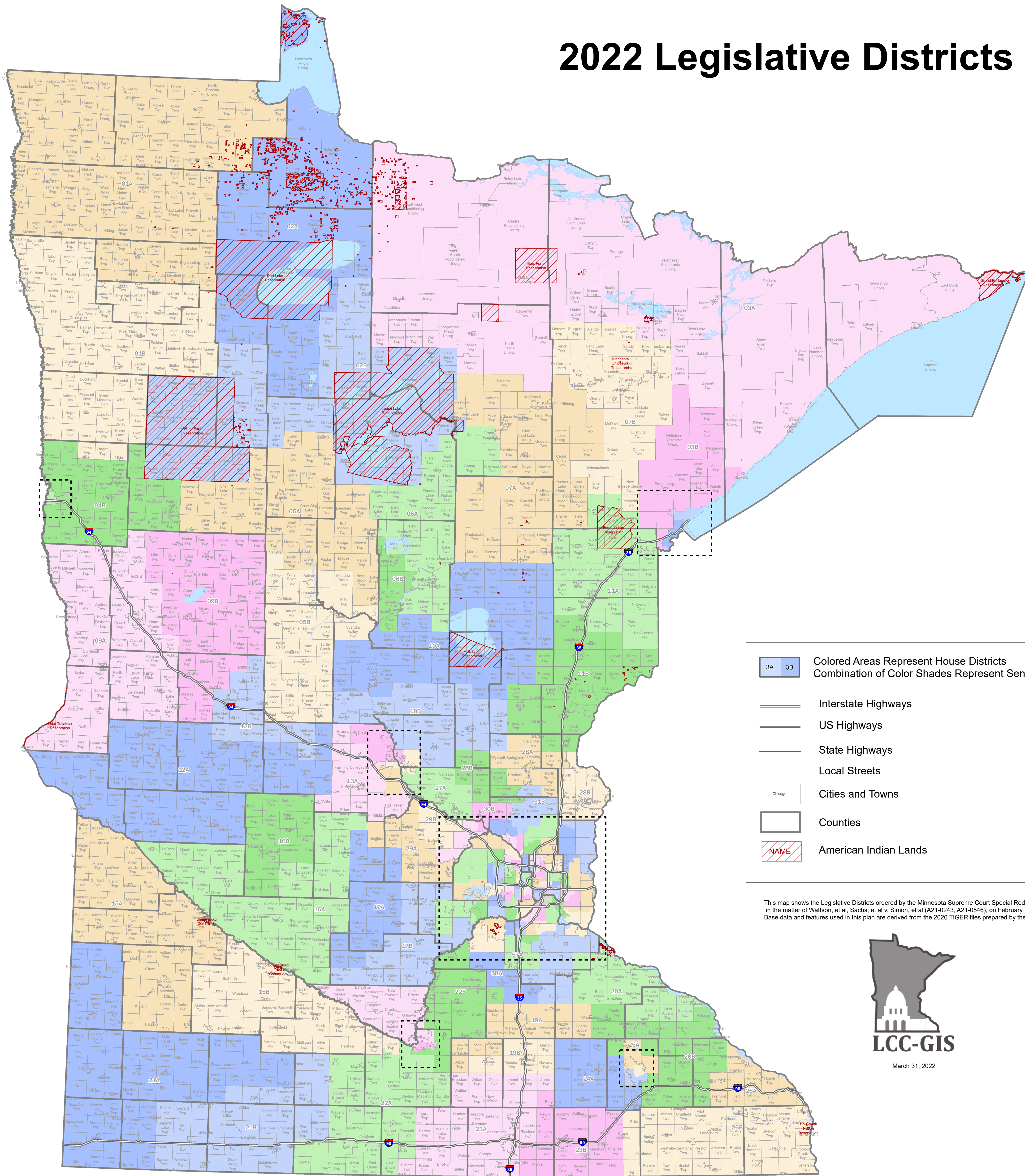


2022 Legislative Districts

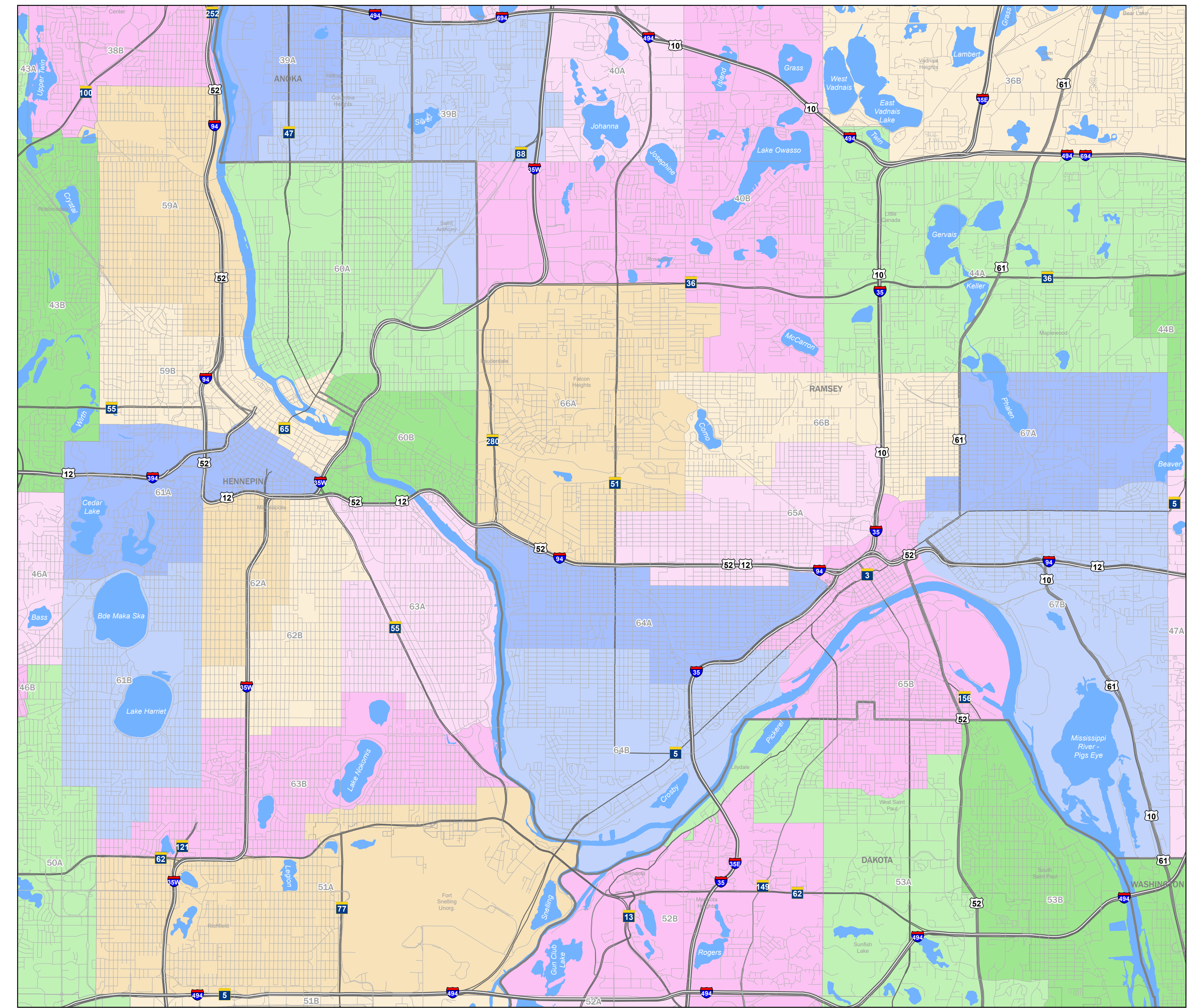


- 3A 3B Colored Areas Represent House Districts
Combination of Color Shades Represent Senate Districts
- Interstate Highways
- US Highways
- State Highways
- Local Streets
- Cities and Towns
- Counties
- NAME American Indian Lands

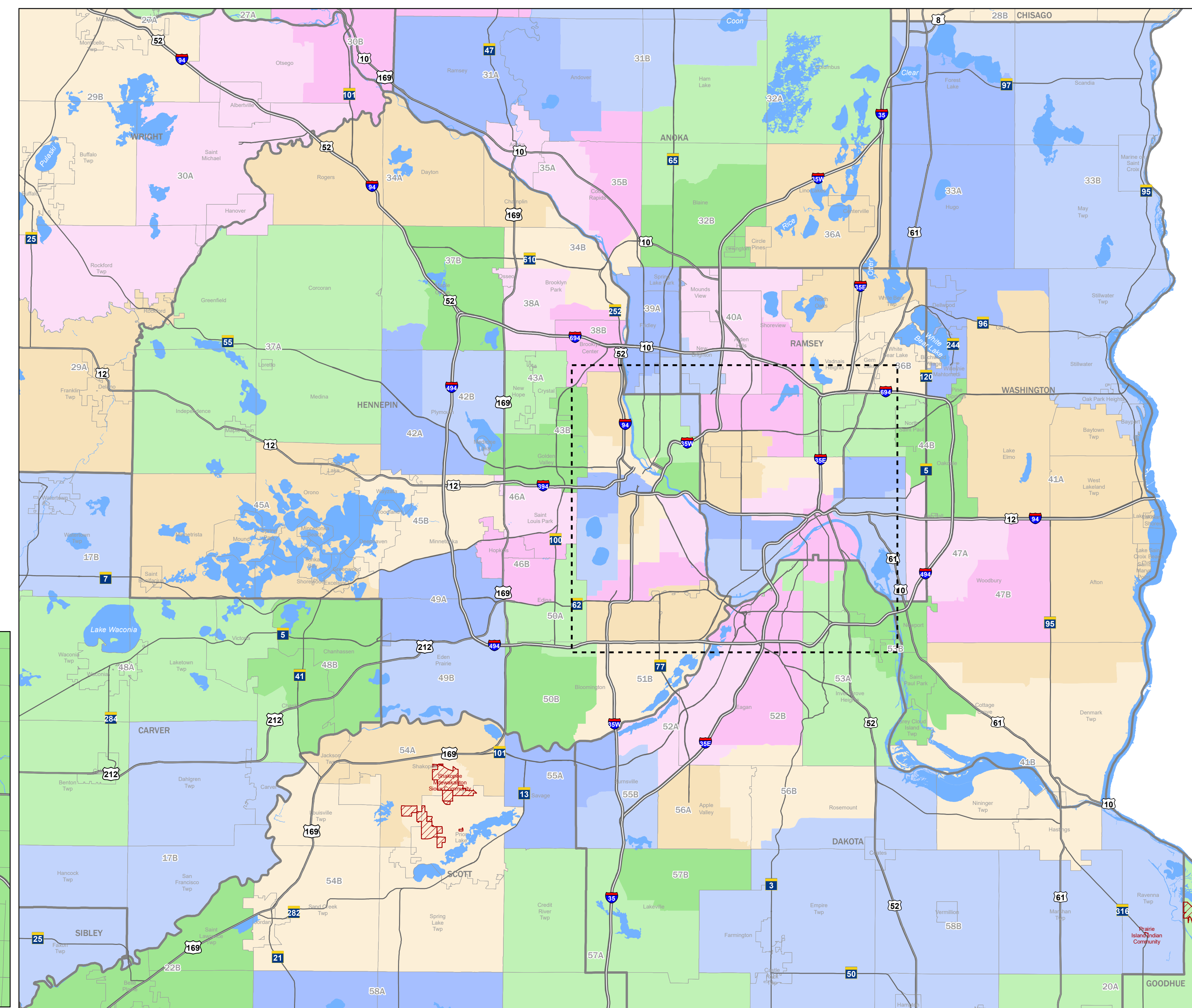
This map shows the Legislative Districts ordered by the Minnesota Supreme Court Special Redistricting Panel in the matter of Watkinson, et al. Sachs, et al. v. Simon, et al. (A21-0243, A21-0546), on February 15, 2022. Base data and features used in this plan are derived from the 2020 TIGER files prepared by the U.S. Census Bureau.



Minneapolis and St. Paul



Metro Area



Duluth

Mankato

Rochester

St. Cloud

Moorhead

